

SBHA's Expert Consulting Services to Better Serve Students through School-Based Health Care

Resources, Training, and TA

2022 National SBHC Conference

June 29, 2022

11:00 am – 12:00 pm ET



OBJECTIVES



- **Describe** how SBHAs' consulting services can strengthen your school-based health care efforts to better serve students.
- **Identify** what customizable services we provide including SBHC start-up, improvement, state leadership, youth development, and more.
- **Explain** the process of consulting with SBHA.





School-Based Health Alliance

Transforming Health Care for Students

Our **Focus**

The School-Based Health Alliance Works to Support & Grow SBHCs

Policy	Standards	Data	Training
			
Establishes and advocates for national policy priorities	Promotes high-quality clinical practices and standards, including for telehealth	Supports data collection and reporting, evaluation, and research	Provides training, technical assistance, and consultation

We support the improvement of students' health via school-based health care by supporting and creating community and school partnerships www.sbh4all.org

National SBHA

www.sbh4all.org

Pressroom Contact Blog Donate f t in



Who We Are ▾ What We Do ▾ Events ▾ Resources ▾

Search Q



WHO WE ARE

Meet our team and our partners.



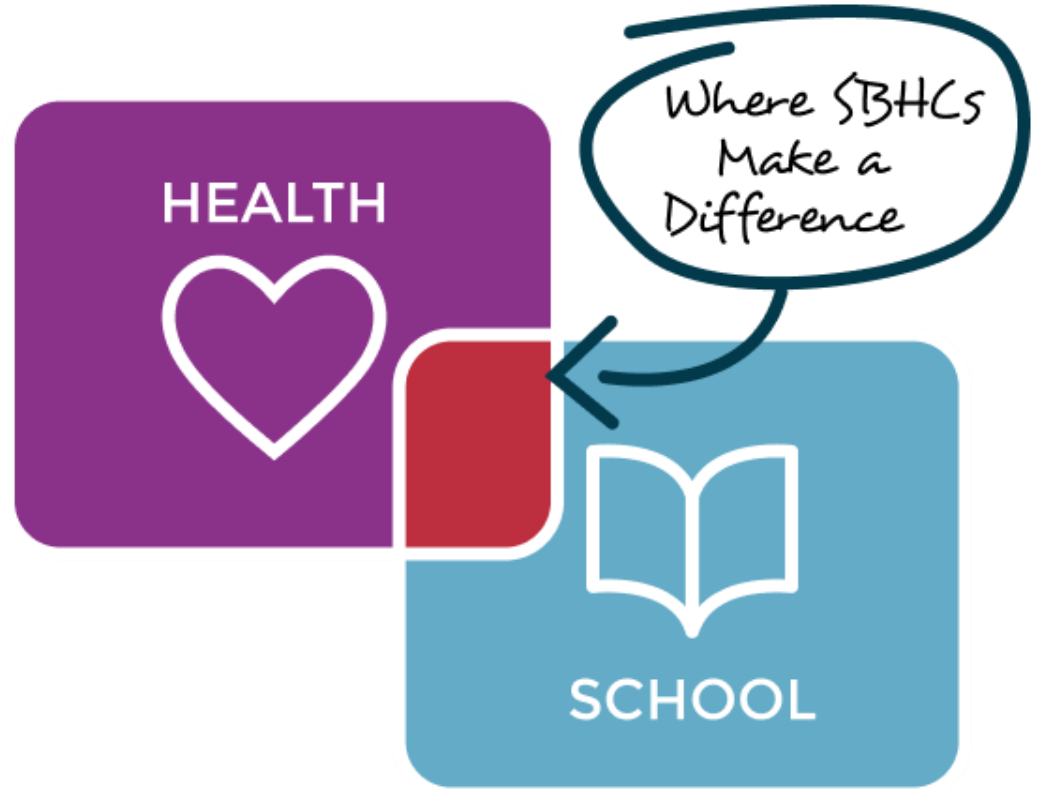
WHAT WE DO

Explore our priorities, initiatives, and services.



LEARN MORE

Discover how school-based health care supports



GETTING TO KNOW YOU



School Health *Services*

Types of Services

Traditional School Health examples:

- School nursing services
- Speech therapy
- Counseling
- Nutrition related services
- Occupational therapy
- Chronic care management, such as diabetes and asthma

Includes services required to meet Free and Appropriate Public Education (FAPE)

School-Based Health *Care* Prevention and Intervention examples:

- Medical care
- Mental/behavioral health care
- Oral health care
- Vision care
- School-based health centers



POSSIBLE AVENUES FOR SCHOOL-BASED HEALTHCARE PARTNERSHIPS



Vaccine clinics



Mobile units



Behavioral health
counseling



Comprehensive
school-based health
centers



WHY WORK WITH US?



“With the training and consulting services team’s support, we grew Georgia’s number of SBHCs from two to eighty.”

- Veda Johnson, MD,
Department of Pediatrics Urban Health
Program at Emory University

Over 300 years of combined experience

Best practice approaches

Individualized services based on your needs



OUR CONSULTING TEAM



Tammy Alexander, M.Ed.
VP, State Relations

[Visit bio](#)



Emily Baldi, MSW
Program Manager

[Visit bio](#)



Laura Brey, MS
Chief Operating Officer &
Chief Strategy Officer

[Visit bio](#)



Katherine Cushing, MPH
Senior Program Manager of
Quality, Research & Evaluation

[Visit bio](#)



Theresa Dominguez, MPH
Senior Program Manager

[Visit bio](#)



Paula Fields, MSN, BSN, RN
VP Programs & TA

[Visit bio](#)



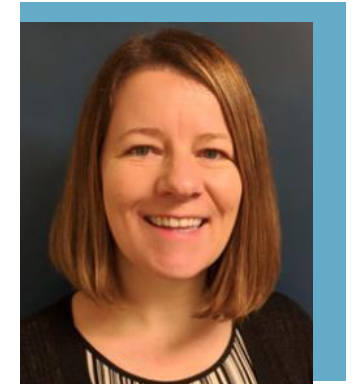
Seleena Moore, MPH
Senior Program Manager

[Visit bio](#)



Andrea Shore, MPH
Chief Program Officer

[Visit bio](#)



Katy Stinchfield, MS, LPC
Director of BH Programs

[Visit bio](#)



WHO ARE OUR CLIENTS?



Healthcare Providers

Schools

Philanthropy

State-level stakeholders

"I can say for the whole team that we have truly appreciated the School-Based Health Alliance's expertise and support on our journey here in Asheville. You helped us lay a strong foundation for school-based health centers to be successful for years to come. We couldn't have gotten this far without you!"

- Deborah Calhoun, United Way of Asheville and Buncombe County



CURRENT AND PAST CONSULTING CLIENTS

- Alluvion Health
- American Academy of Pediatrics
- Apex Education, Inc.
- Arkansas Children's Hospital
- Atlantic Philanthropies
- Baptist Health
- Bi-State PCA
- Case Medical Center
- Chartrand Foundation
- Children's Home Society
- Colgate
- CO Health Foundation
- Community Foundation of Greater Birmingham
- Central Virginia Health Services/Cameron Foundation
- CVS
- Delta Dental of Virginia Foundation
- Emory University, Urban Health Program
- Erie Community Foundation
- GA Health Policy Center
- Greater Valley Health Center
- Hamilton County Public Schools
- Hamilton Health Center
- Health Leads
- Health Forward Foundation of Greater Kansas City (Missouri)
- Healthcare Foundation of NJ
- Highmark Foundation
- Hopewell Public Schools
- Interact Health
- Jewish Renaissance Medical Center
- Jacksonville Public Education Fund
- Kansas Community Care Network
- King County, Washington
- Kresge Foundation
- Louisiana Department of Public Health
- LeHigh Valley Health Network
- Manatee County
- MO School Boards Association
- Montana Health Care Foundation
- Montana Primary Care Association



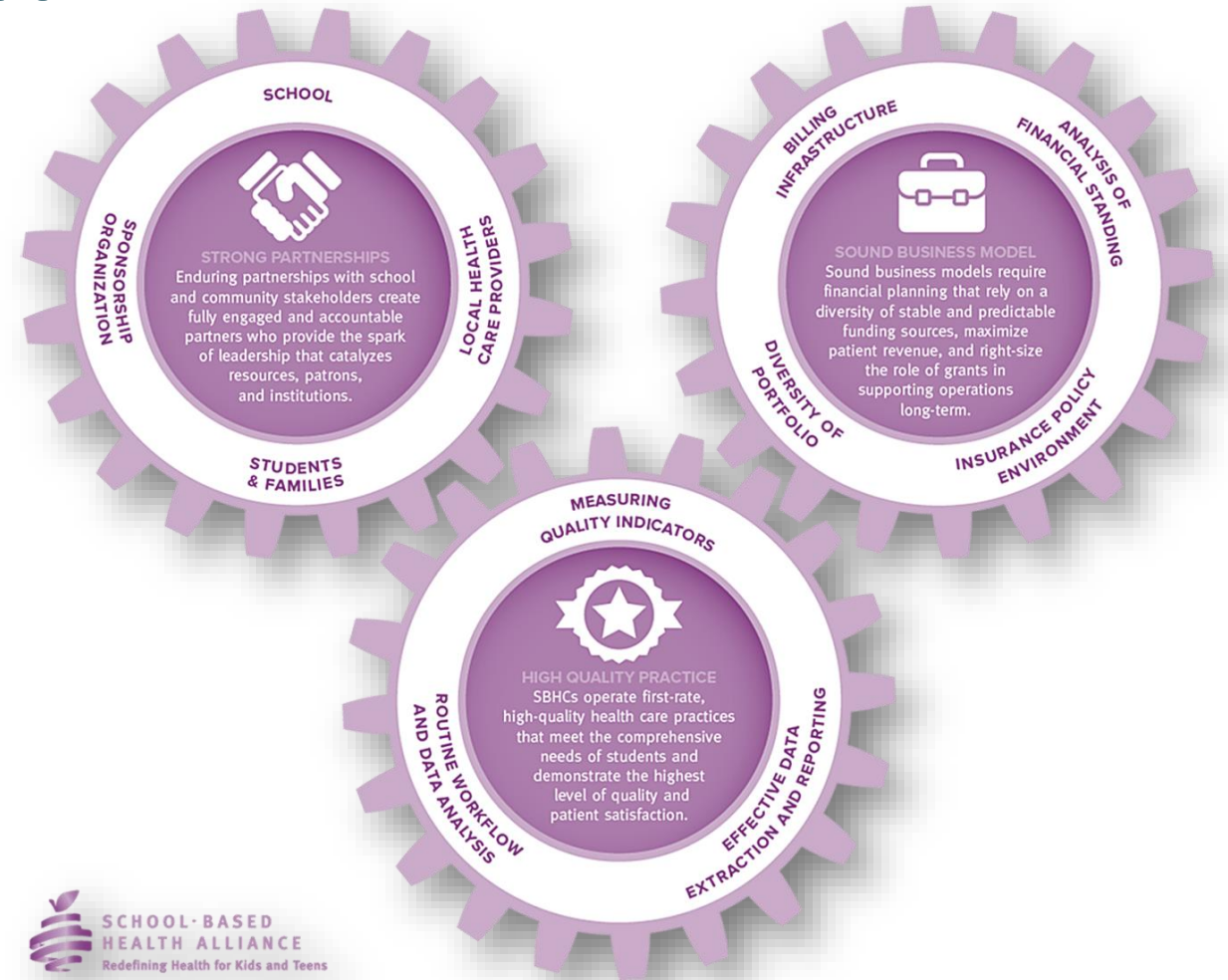
CURRENT AND PAST CONSULTING CLIENTS

- National Alliance to Advance Adolescent Health
- National Association of Community Health Centers
- National Coalition of STD Directors
- NC Community Health Center Association
- New Bedford Public Schools
- No Kid Hungry
- NYC Department of Health
- Obici Foundation
- One Health
- OneSight
- Orange Blossom Family Health
- Rappahannock Public Schools
- Sacred Heart Hospital
- Sapphire Community Health Center
- School-Based Health Alliance of MI
- Shah Family Foundation
- Show-Me School-Based Health Alliance
- United Way of Asheville and Buncombe County
- United Way of Petersburg and Greater Richmond
- University of California San Francisco
- University of Central Florida Center for Community Schools
- University of Maryland Department of Health Policy
- University of NC at Greensboro
- University of North Texas Health Sciences Center
- Virginia Premier
- Walker County Public Schools
- Weitzman Institute
- West Virginia Primary Care Association
- Wingspan Care Group
- Winter Park Health Foundation
- Wyoming Department of Health
- Wyoming Telehealth Network

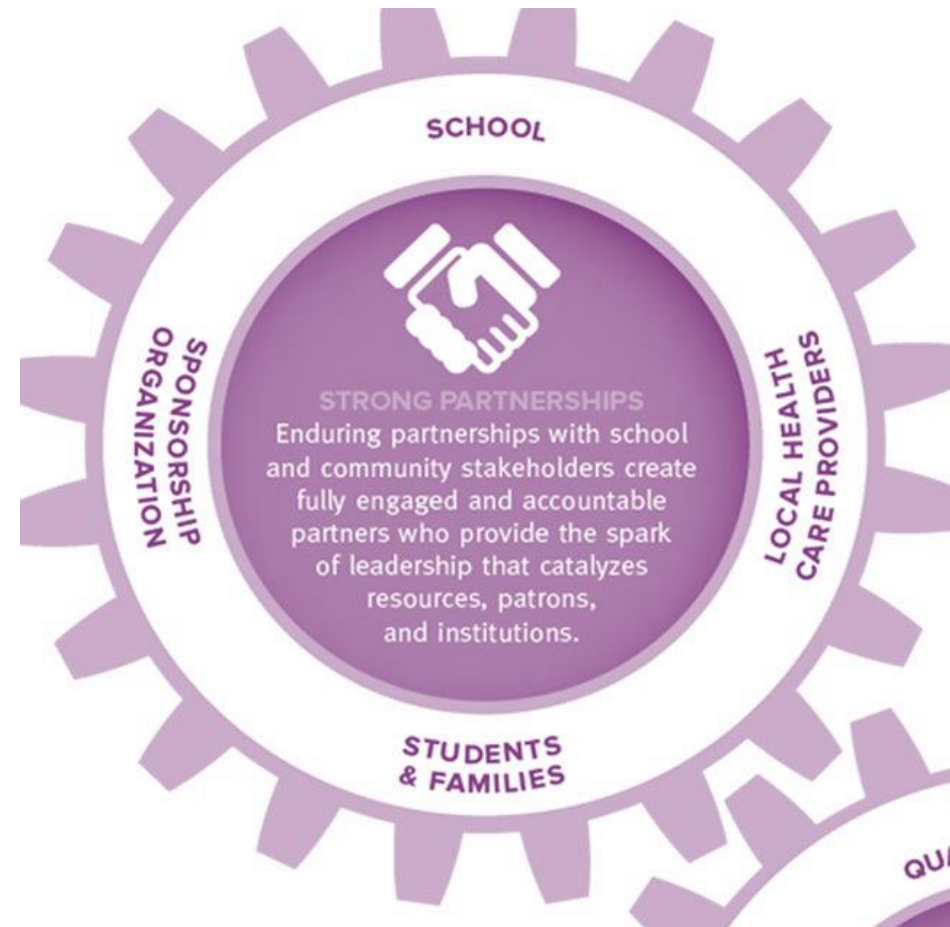


NUTS & BOLTS OF SUSTAINABILITY

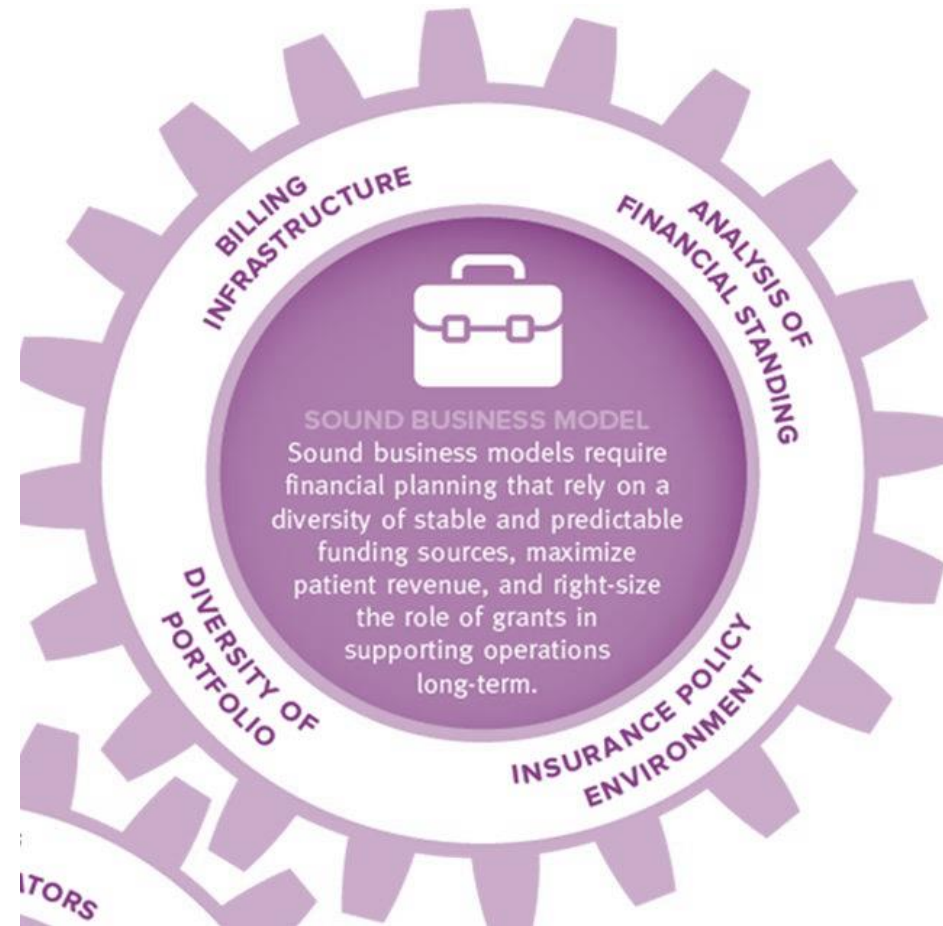
- ▶ Strong Partnerships
- ▶ Sound Business Model
- ▶ High Quality Practice



CONSULTING GOALS: STRONG PARTNERSHIPS



CONSULTING GOALS: SOUND BUSINESS MODEL

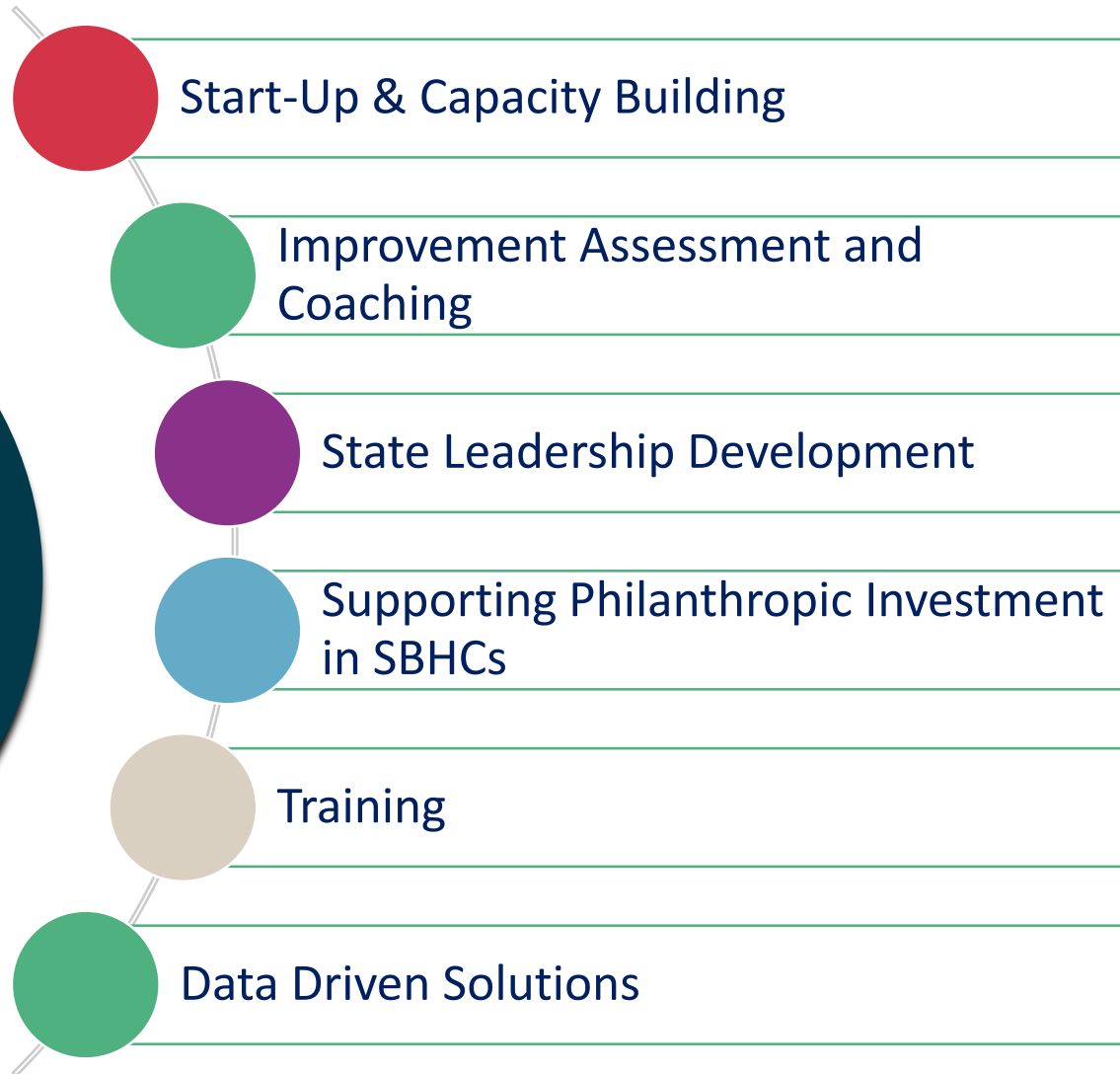


CONSULTING GOALS: HIGH QUALITY PRACTICE



Customizable
based on
your needs!

OUR CONSULTING SERVICES



OUR STRATEGIES



Assessments



Landscape analyses



Trainings



Stakeholder convenings



Deliverable development



Resource review



Site visits



WHAT DOES WORKING TOGETHER LOOK LIKE?

Collaborative

Flexible

Action-oriented

Responsive



HOW TO GET STARTED WORKING WITH SBHA

Reach out to
info@sbh4all.org

Schedule a
meet-and-greet
to discuss your
needs & budget

Collaborate to
build a
customized
scope of work



CONSULTING FLYERS



"With the training and consulting services team's support, we grew Georgia's number of SBHCs from two to eighty."

- Veda Johnson, MD, Department of Pediatrics Urban Health Program at Emory University

Expert Consulting Services

FOR YOUR SCHOOL-BASED HEALTH CARE NEEDS

Our purpose

The School-Based Health Alliance (SBHA) is the premier national technical assistance and training provider to the school-based health care field. We contribute to improving child and adolescent health via school-based health care by supporting and creating community and school partnerships. Our consulting team offers more than 250 years of combined experience working with teams in planning, implementing, operating, evaluating, and improving community-provided school-based health care, including school-based health centers (SBHCs).

Why school-based health care?

School-based health care is a partnership among a community health care provider, a school, and a community, primary care and/or behavioral health clinicians employed by community health care organizations such as Health Centers, hospitals, and health departments partner with schools to deliver health care to students in school. School-based health care comes in many shapes and sizes, from screenings and brief interventions, to behavioral health counseling, to vaccination efforts, to preventive and acute primary care. School-based health care complements the important services provided by school-employed health professionals such as school nurses, school counselors, and school social workers.

A school-based health center is a robust form of school-based health care in which primary care services are available to students in a location on or near a school campus in-person, via telehealth, or through a hybrid in-person/telehealth model. Most SBHCs are open full-time, and most offer additional services like behavioral health, oral health care, and vision care. They offer an ideal model for school-based health care because they remove barriers to access, treating children in a convenient, nurturing, and easily accessible setting. The Community Preventive Services Task Force (CPSTF), an independent, nonfederal panel of public health and prevention experts established by the U.S. Department of Health and Human Services, recommends the implementation and maintenance of SBHCs in low-income communities to improve education and health outcomes.



What role can schools play?

Schools are a vital partner in the work of school-based health care programs! They typically provide physical space for the program, and they implement policies that facilitate students' use of the program. They may collaborate with the health provider to conduct outreach to students and families. School staff can make referrals to the school-based health care program, importantly, school-based health care program staff work in partnership with, rather than replace, school staff, including school nurses, school counselors, and social workers.



Our services

Using proprietary school-based health care tools and resources and based on best practices from the field, we work with teams at all stages of school-based health care program development—from clients engaging in initial conversations to identify health sponsor(s), to schools who are beginning to offer some primary care or behavioral health services in partnership with community-based health providers, to communities with fully-operational SBHCs who need support in creating improvement plans.

START-UP & CAPACITY BUILDING

For groups interested in starting school-based health care programs, we offer consulting on selecting a health partner whose services are conducive to sustainable school-based health care, advisory groups, readiness assessment, business planning, sustainability, and planning grants. We also offer capacity building through individualized coaching calls and trainings.

IMPROVEMENT ASSESSMENT AND COACHING

For existing school-based health care programs, we offer personalized and continued support for improving partnerships, sound business practices, and high-quality practice.

TRAINING

We offer trainings on a variety of topics, including SBHC 101, core competencies for school-based health centers, partnerships, marketing, quality improvement, sustainability, social determinants of health, and adolescent-friendly health care.

YOUTH DEVELOPMENT TECHNICAL ASSISTANCE

We offer technical assistance to support integrating the youth development approach into school-based health care programs and other child and adolescent health-focused programs. We help organizations create meaningful partnerships with youth throughout their programming, such as developing youth advisory councils and youth programs at conferences.



Ready to start working with us?

CONTACT US AT INFO@SBH4ALL.ORG

to discuss individualized consulting options. Our team will respond to your email with a few questions to learn more about your goals and set up a call to discuss your needs and budget.

"Working with the School-Based Health Alliance was wonderful! They were responsive to the need for education in our state and fostered action among multiple school districts. We now have tools to help schools plan, implement, and sustain their efforts!"

— Andrea Shipley, Senior Project Coordinator, Wyoming Telehealth Network



©2022 School-Based Health Alliance. All rights reserved.

To learn more about SBHA and School-Based Health Centers, visit our website: www.sbh4all.org



FREE - SBHC RESOURCE HUB

<https://www.sbh4all.org/resources/>

- The Blueprint – tools, examples, guides, and helpful resources
- Clinical Performance Measures QI Toolkit
- Sustainable Business Practices Toolkit
- School-Based Telehealth Playbook
- Vaccines and Immunizations
- Hallways to Health Toolkit
- School Oral Health Playbook
- Adolescent Substance Use Prevention in SBHCs Toolkit
- Children’s Health & Education Mapping Tool
- Health Care Transition Toolkit
- And more!



RESOURCES

SBHC PLANNING CHECKLIST

<https://www.sbh4all.org/what-we-do/services/>



School-Based Health Center (SBHC) Planning Checklist



- Establish SBHC regional planning committee
- Orient SBHC planning committee to the SBHC model
- Identify a medical sponsor organization and other potential health care provider partner organizations
- Visit existing SBHC(s)
- Establish SBHC advisory group (e.g. principal, other school leadership, school social worker, students, parents/guardians, school nurse, sponsor organization member, and others.)
- Conduct community readiness assessment
- Conduct SBHC needs assessment
- Develop and implement marketing and engagement plan for target audiences and gatekeepers
- Identify potential SBHC location(s) via site visit(s) Select a well-considered location for the SBHC based on readiness assessment, needs assessment, site visit(s), and needed construction/renovation
- Determine appropriate staffing
- Develop narrative business plan



Consulting Services

The School-Based Health Alliance is a highly respected provider of extensive technical assistance and training to the school-based health care field. Our school health consulting staff has decades of experience in designing, operating, and evaluating school-based health center (SBHC) programs. Let us put that expertise to work for you!

- Complete a pro-forma business plan to determine funding needs and potential revenue
- Solicit capital and operational funding from variety of sources
- Develop necessary agreements and procedures to bill commercial and public insurance
- Draft and execute a memorandum of understanding among SBHC partners (e.g. school district, medical sponsor organization, behavioral health, oral health, local department of health.)
- Develop comprehensive SBHC consent form that includes bi-directional information sharing to promote continuum of care (e.g. school nurse, school counselor, PCP, dentist, parent/guardian.)
- Complete SBHC renovation/construction process
- Engage students to ensure SBHC space is student-friendly
- Purchase appropriate equipment and supplies
- Ensure appropriate technology access in collaboration with school



RESOURCES

INFOGRAPHICS



SCHOOL-BASED HEALTH ALLIANCE

The National Voice for School-Based Health Care

Since 1995, the School-Based Health Alliance (SBHA), a 501(c)(3) nonprofit corporation, has supported and advocated for high-quality healthcare in schools for the nation's most vulnerable children. Working at the intersection of healthcare and education, SBHA is recognized as a leader in the field and a source for information on best practices by philanthropic, federal, state, and local partners and policymakers.



Among its primary functions, SBHA:

- Establishes and advocates for national policy priorities
- Promotes high-quality clinical practices and standards
- Supports data collection and reporting, evaluation, and research
- Provides training, technical assistance, and consultation

Why is School-Based Health Care so important?

Health is a critical factor in setting our children up for success. Healthy children are more likely to attend school ready to learn and achieve higher levels of educational attainment, providing greater access to future opportunities and a pathway out of poverty. School-based health centers (SBHCs) have demonstrated their ability to increase access to health care, reduce emergency room use, lower Medicaid costs, and increase the use of sensitive services like mental health counseling. The Community Preventive Services Task Force recommends SBHCs as an evidence-based intervention to improve educational and health outcomes in low-income communities.

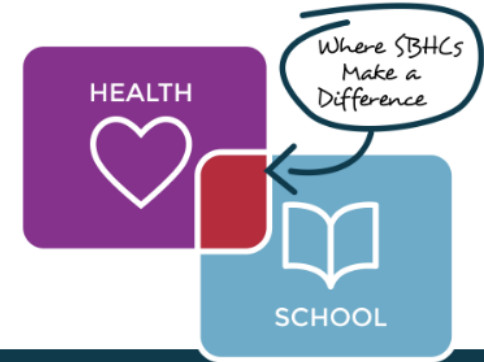
What is a School-Based Health Center?

School-based health centers (SBHCs) provide the nation's vulnerable children and youth with access to primary care, behavioral health, oral health, and vision care where they spend the majority of their time - at school. Working at the intersection of health and education, SBHCs collaborate with school districts, school principals, teachers, school staff, families, and students. This collaboration, care coordination, and youth engagement results in not only improved student, school staff, and community health literacy and outcomes, but also contributes to positive educational outcomes including reduced absenteeism, decreased disciplinary actions and suspensions, and improved graduation rates. SBHCs advocate for the needs of low-income children, youth, and families, provide them with a safe haven, and serve as a protective factor that reduces poor health and education outcomes.

School-Based Health Centers

The Intersection of Health and Education

Health is a critical factor in setting our children up for success in life inside and outside of school. School-based health centers (SBHCs) increase access to health care, contribute to positive educational outcomes, reduce emergency room use, lower Medicaid costs, and expand access to mental health services.



Healthy Benefits

Services that SBHCs Provide



<https://www.sbh4all.org/what-we-do/>

Questions & Answers



Thank you!

Contact Us:
School-Based Health Alliance
info@sbh4all.org