

The School-Based Health Alliance Children's Health and Education Mapping Tool





School-Based Health Alliance

Transforming Health Care for Students

Our **Focus**

The School-Based Health Alliance Works to Support & Grow SBHCs

Policy



Establishes and advocates for national policy priorities

Standards



Promotes high-quality clinical practices and standards, including for telehealth

Data



Supports data collection and reporting, evaluation, and research

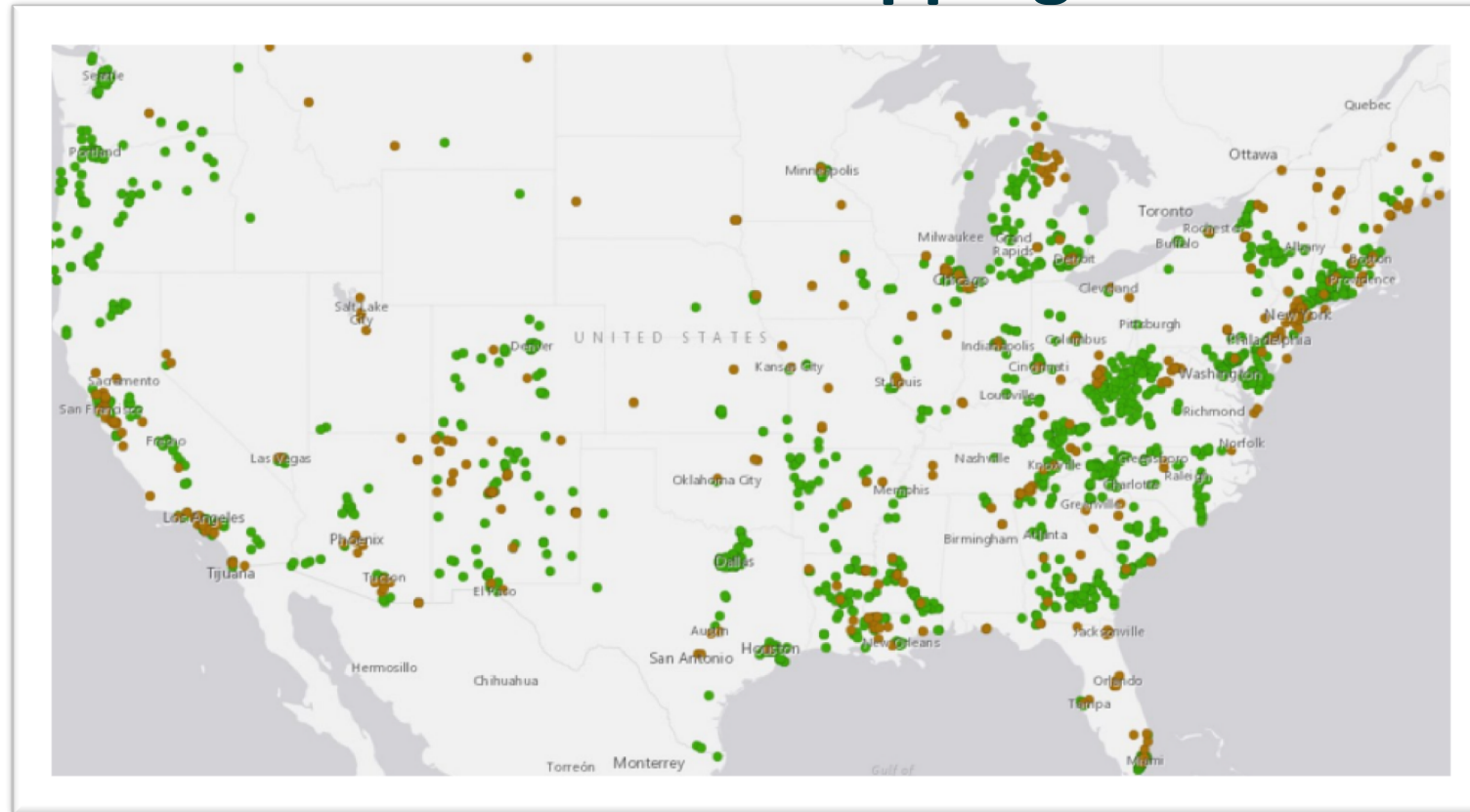
Training



Provides training, technical assistance, and consultation

We support the improvement of students' health via school-based health care by supporting and creating community and school partnerships www.sbh4all.org

Children's Health and Education Mapping Tool

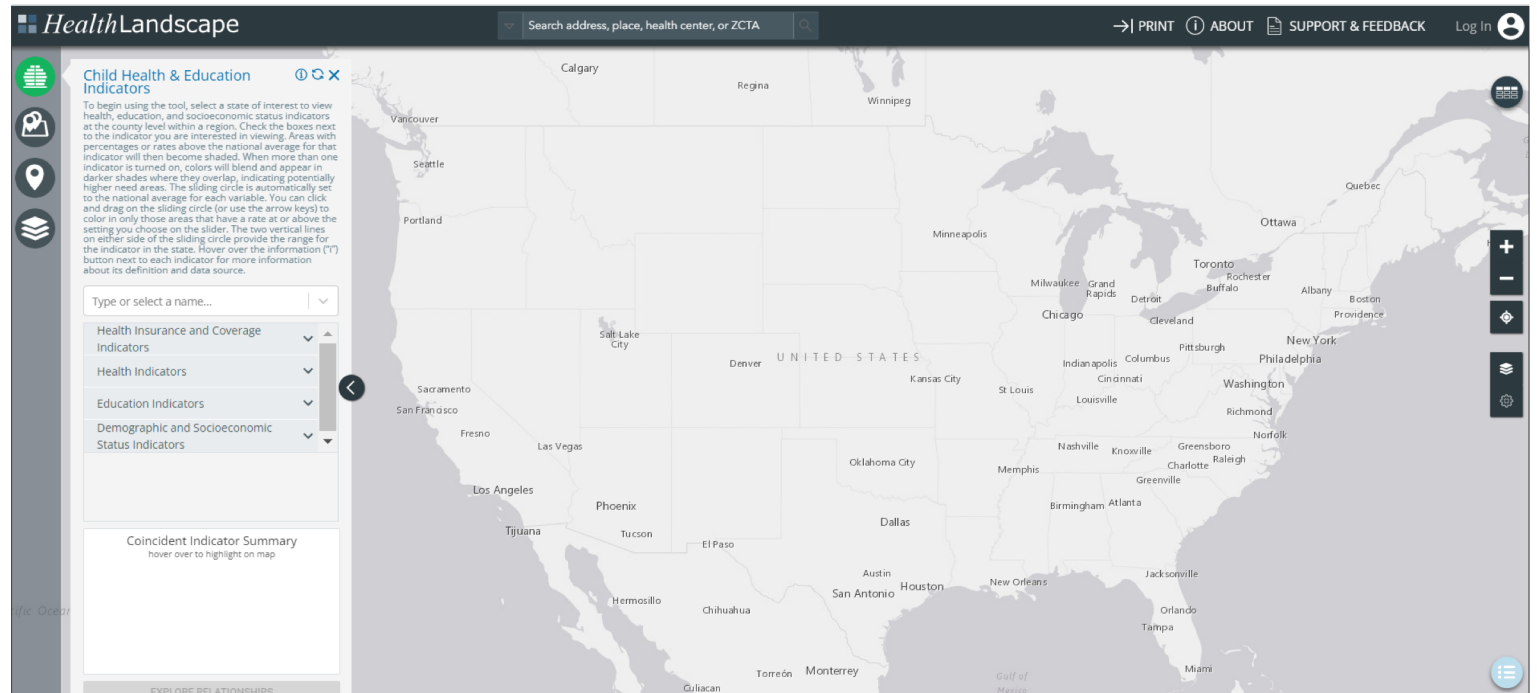


The School-Based Health Alliance's Children's Health and Education Mapping Tool is a free, interactive resource for individuals seeking to address chronic inequities among low income children and adolescents.



Children's Health and Education Mapping Tool

- Launched in 2014
- Uses Geographic Information System (GIS) mapping, used in public health, to look at overlay data by location, map health disparities, and determine areas of need



<http://data.sbh4all.org/sbhadb/maps>



Data Sources*

- 2021 SBHA National Survey
- 2016-2017 SBHA National Census
- CDC Social Vulnerability Index
- Universal Data System (UDS) Mapping
- US Census Bureau's American Community Survey
- National Center for Education Statistics Natality Files
- CDC's Diabetes Interactive Atlas
- US Department of Agriculture Food Atlas
- Comprehensive Affordability Strategy Data



*data layers limited to county level

The screenshot shows the HealthLandscape application interface. At the top, the 'HealthLandscape' logo is on the left, and a search bar on the right contains the text 'Search address, place, health center, or ZCTA'. Below the logo is a vertical sidebar with several icons: a green building icon, a red location pin icon, a black location pin icon, and a green stack of layers icon. The main content area is titled 'SBHCs & School Characteristics' and includes a sub-header: 'Check the boxes next to the indicator that you are interested in viewing on the map.' Below this are two filter sections. The first section has two items: 'Public Schools' with an unchecked checkbox and a count of '0', and 'School-Based Health Centers' with a checked checkbox and a count of '0'. The second section is titled 'SBHC Sponsor Organization' and contains a list of ten categories, all of which are checked: 'Local health department', 'Community health center', 'School system', 'Non-profit/CBO', 'Hospital or med center', 'Tribal government', 'Mental health agency', 'University', 'Other', 'No data', and 'None'. Below this is a section for 'SBHC Provider Team' with a checked checkbox for 'Primary Care Only'. At the bottom of the filter panel is a 'Select Distance' slider set to '5' miles, with a '5mi' label and a '50' maximum value. A 'GENERATE REPORT' button is located at the bottom of the interface. On the right side, a map of the United States is visible, showing major cities like Vancouver, Seattle, Portland, Sacramento, San Francisco, Fresno, Las Vegas, Los Angeles, and Tijuana. A left-pointing arrow is overlaid on the map.

Use the Children's Health and Education Mapping Tool to:

1. Assess Community Health
2. Identify Areas of Need
3. Plan
4. Examine Characteristics of Public Schools and SBHCs
5. Collaborate
6. Advocate
7. Fundraise



Key Features

Facilitate Connections

- Visualize locations of schools and community health care providers to explore potential partnerships
- Displays SBHC and Health Center information to indicate which schools have existing relationships with providers
- Filter to display public schools of interest (Title 1 eligible, grades served, free and reduced lunch rate)

Assess Community Needs

- Users can view data that are traditionally reported in separate silos and search, map, and download these indicators
- Can view the locations of SBHCs, schools, and community partners, and strategically plan for future expansion of SBHCs

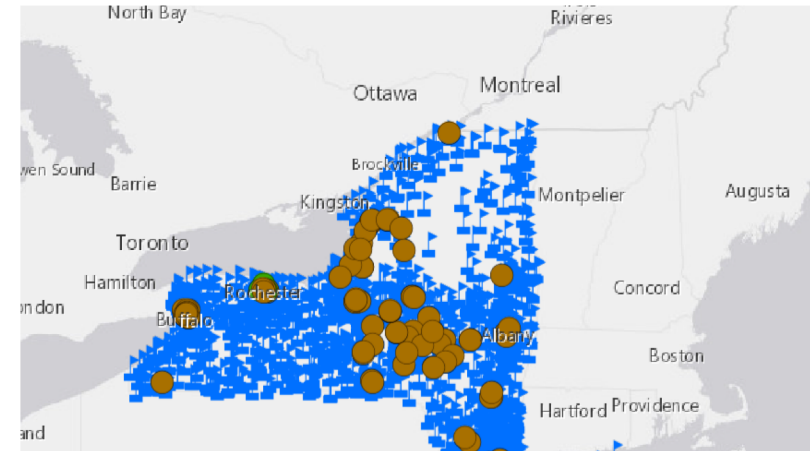
Public Health Emergency Mobilization

- Assist with mobilization for school districts to map data needed for assistance in pandemic mitigation strategies
- Streamline emergency preparedness efforts of where the work is being done and how to target different areas in the future



Tools for Developing Resources

- **Upload user data to map points and aggregate geography data**
- **Customize the display**
 - Create boundaries
 - Arrange and change the opacity of layers
 - Isolate a state of interest for a more focused report
- **Export data file**
- **Download reports and maps**
 - Add titles, legends, change between portrait and landscape view of the map



HealthLandscape Search address, place, health center, or ZCTA

Isolate State | PRINT | ABOUT | SU

SBHCs & School Characteristics

Check the boxes next to the indicator that you are interested in viewing on the map.

- Public Schools 350
- School-Based Health Centers 33

Hide Filters / Show Filters

Select Distance: 5 (1 to 50) 5mi

GENERATE REPORT



Data Limitations

1. The data is not live. Please check the data sources to see the year(s) of data reflected on the map for locations and health and education indicators. School-based health center locations are updated based on responses to SBHA's last National Census of School-Based Health Centers. SBHCs may have opened or closed since the previous data update.
2. The Child Health & Education Indicator data is at the county level. Variations may exist within counties that the data do not show.
3. The Mapping Tool cannot explain causation of Child Health & Education Indicator values.
4. The Mapping Tool does not testing for statistically significant differences between populations or locations.



Accessing Additional SBHC Data

To access additional data from the National School-Based Health Care Census, email research@sbh4all.org.

Recommended Citation

School-Based Health Alliance (2022). The School-Based Health Alliance Children's Health and Education Mapping Tool. Washington, DC: School-Based Health Alliance. <https://data.sbh4all.org/sbhadb/maps/>

Funding and Development Acknowledgement

SBHA's Evaluation and Quality Panel provided initial support in shaping the vision of the Mapping Tool. SBHA received funding from the Atlantic Philanthropies, Aetna Foundation, Bechtel Foundation, and the Bureau of Primary Health Care to support the original development of the tool.

This publication was made possible by grant number 6 U3FCS41782-01-01 from the Health Resources and Services Administration (HRSA), Bureau of Primary Health Care. Its contents are solely the authors' responsibility and do not necessarily represent the official views of HRSA.

