

Quality Counts: Setting You and Your EHR up for success in documenting and reporting the five standardized performance measures for SBHCs

October 11, 2016



Quality Counts

Home > Resources > Quality Counts



Quality Counts

[Why Quality Counts](#)

[Measure Selection Process](#)

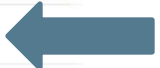
[Five Performance Measures](#)

[Setting Up For Success](#)

[Compare Your Data Nationally](#)

[Data Use, Privacy, and Security](#)

[Quality Counts Webinars](#)



[Ask for Help](#)

Don't Miss Our Next Webinars!

Quality Counts: Setting You and Your EHR Up for Success in Documenting and Reporting the Five Standardized Performance Measures for SBHCs

Tuesday, Oct 11, 2016 - 2:00pm

Presenters




Lynn Bakken, MSN, PNP-BC
Medical Director,
MCPN



Maureen Daly, MD, MPH
Clinical QI Consultant,
CDPHE

Objectives

- 1. Describe why a set of standardized performance measures is essential to strengthening and sustaining SBHCs**
 - 2. Understand basic EHR terminology and how to speak to your vendor and IT support**
 - 3. Identify three potential solutions to data extraction**
- 

Why Measure Performance?

1. Payment reform & Population health
 - a. Payment for health outcomes not visits
 - i. Key Performance Indicators (KPI)
 - b. Payment for improving the health of a population
 - i. Population could be all the patients of a clinic
 - ii. Population could be all the students in the school
2. Colorado (among others) is taking the lead
 - a. Train has left the station



Why Measure Performance?

3. Demonstrate your SBHCs as the Leaders
 - a. Having data supports SBHCs as ahead of the pack
 - b. Be indispensable to the medical sponsor



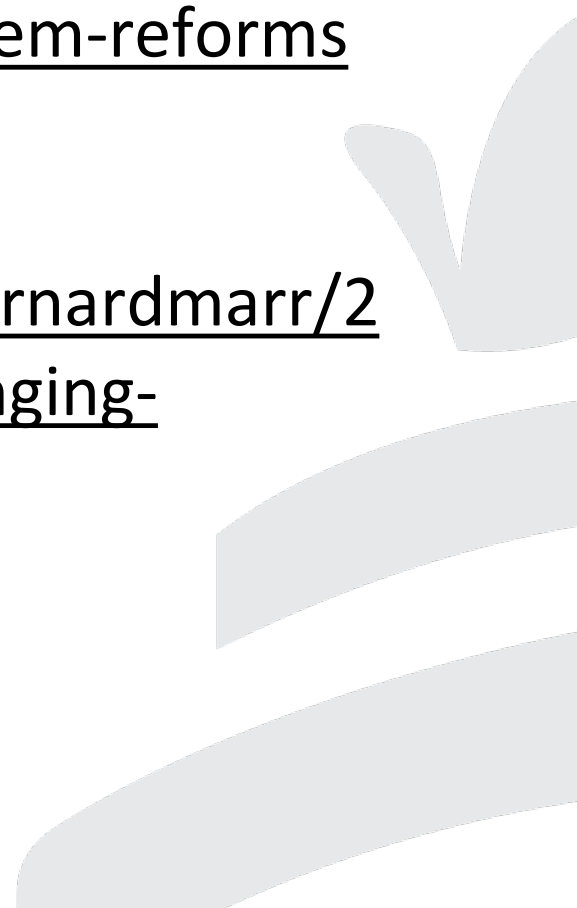
Web Resources

Population Health & Payment Reform

<http://www.chcs.org/resource/population-health-in-medicaid-delivery-system-reforms>

Big data in health care

<http://www.forbes.com/sites/bernardmarr/2015/04/21/how-big-data-is-changing-healthcare/#47f45fc632d9>



Standardized performance measures for SBHCs

Annual well child visit

Annual risk assessment

BMI screening and nutrition/physical activity counseling

Depression screening

Chlamydia screening

Electronic Health Record Terminology

- 87% of SBHCs use an electronic health record (EHR) (2013-14 Census of SBHCs)
- All certified EHRs allow for extraction of data that is entered:
 - **CPT codes (Procedure Codes)**
 - **ICD (Diagnosis codes)**
 - **Demographics (DOB, gender, race/ethnicity)**
 - **Discrete fields**
 - **Observational terms**
 - **Free text (not extractable)**

Quality Counts Measures Dictionary



Link to Quality Counts Measures Dictionary:

<http://www.sbh4all.org/resources/quality-counts/five-performance-measures/>

Annual Well Child Visit

CPT

Established Pt	New Pt	
99391	99381	Infant
99392	99382	1-4 years
99393	99383	5-11 years
99394	99384	12-17 years
99395	99385	18+ years

ICD10

Z00.121	Child health exam w/ abnormal findings
Z00.129	Child health exam w/o abnormal findings
Z00.00	Adult med exam w/o abnormal findings
Z00.01	Adult med exam w abnormal findings

Annual Well Child Visit

But how do you capture Well Child Visit done by outside provider?



Aspects of Performance Measures for Which there is a CPT/ICD

- Well child visit done at SBHC
- BMI, nutrition & physical activity counseling
- Depression screen
- Chlamydia screen

And maybe annual risk screen

Aspects of Performance Measures for Which there isn't a CPT/ICD


- Well child visit done by non-SBHC provider
- Annual risk assessment (in some states)
- Depression follow-up plan
- Sexual activity (to determine denominator for chlamydia screening measure)



©Toons4Biz * illustrationsOf.com/7803

“Talking the talk’ with your EHR vendor or IT support

**How to convert free text
into data that you can
query/extract?**



Create Discrete Fields

Discrete field = is finite and could have a numeric value

Examples:

1. Are you sexually active? (Yes or No)
2. PHQ 2/9 Depression Screening Scores
3. Number of mental health follow-up visits planned for positive depression

Create Observational Terms

Observational term = on a continuum, not numeric

Example:

Where was your last well exam?

- *Each response has no statistical reference and there are an infinite number of possibilities*

WCV by Non-SBHC Provider

Well Child: ?

Visit is a Well Child Visit: Yes No Last WCC: WCC in last 12 Mths? Y N Location:

Clinical Lists:

View Prob List	View Med List	View Allergies	Update Directives	View Protocols Due
Update Prob List	Update Med List	Update Allergies	Open Med Admin	Open

(Note: The 'Open' button dropdown menu is open, showing 'MCPN' and 'Ohter' options.)

[Labs In House](#) [Diabetic Foot Exam](#) [Asthma HPI](#) [Backflow](#) [OB Initial](#) [FDC Calculator](#) [OB Fluorostat](#)

Depression Follow-up Plan

!!! Depression

Last PHQ2: Input last score>>> PHQ2 Score: If score is 3-4, implement PHQ9.

Last Score Input last score>>> PHQ9 Score Severity Assessment

Current Score is: Negative Positive N/A - Seeing MH Prov No >>> Score Entered By:

A positive response consists of a score of >=10 (or any response to 9) for referral to MH agencv.

!!Substance Abuse

Part A - In the past 12 months:

Did you drink any alcohol (more than a few sips)? yes no declined

Did you smoke any marijuana or hashish? yes no declined

Did you use anything else to get high - inc illegal drugs, OTC & Rx drugs & things that you sniff or 'huff'? yes no declined

Have you ever ridden in a CAR driven by someone (incl yourself) who was 'high' or had been using alc or drugs? yes no declined

Part B - Fill out with any 'yes' response under Part A.

Do you ever use alcohol or drugs to RELAX, feel better about yourself, or fit in? yes no declined

Do you ever use alcohol or drugs while you are by yourself or ALONE? yes no declined

Do you ever FORGET things you did while using alcohol or drugs? yes no declined

Do your FAMILY or FRIENDS ever tell you that you should cut down on your drinking or drug use? yes no declined

Have you ever gotten into TROUBLE while you were using alcohol or drugs? yes no declined

Scoring: 1 pt for each yes in Part B Calc. CRAFFT **CRAFFT Score:** **CRAFFT Interpretation:**

0 = negative screen
 1 = Counsel and reassess later
 => 2 = Further evaluation/possible referral

Assessments - Other

Trauma Assessment: Add these Referral Orders Pt Nav Referral Or

>>>Screenings Reviewed by MA >>>Screenings Reviewed by Provider (opt) Open Handouts

Recommended Resources - Alc/Sub Referred for Alc/Sub Abuse Counseled Alc/Sub Abuse

Mental Health Referral Ordered Meeting Arranged with In-House Behavioral Health Professional Rx Med for Depression

Sexual Activity

Sexual Activity

Are you sexually active? Yes No

If Yes, Type

Chlamydia Screen

HIV Screen

***Past HIV InHouse Result?**

? Are you interested in any information about BC?

[Reproductive Health form](#)

Rectangular Sm

TIPS

- Start reporting on what you already collect via CPT/ICD10.
- Verify that all CPT and ICD of interest are in EHR & add if not.
- Talk with providers to be sure all are knowledgeable of correct CPT & ICD codes to use for performance measures.
- Start with adding discrete fields/observational terms that are important to your agency/funders.

Poll question

Which best describes your situation?

- I am part of a system with IT support and we can report the performance measures.
- I am part of a system with IT support and we've been unable to report the performance measures.
- I am part of a system with no IT support.
- Other

Scenario A

Your SBHC has IT support but you have been unable to report the performance measures.



Making the Case with your Medical Sponsor

- Know the organization's data reporting priorities
- Show where you can improve the overall scores
- Be willing to be the index site

Tips for Communicating with IT Support-Data team members

The clinic quality lead- that's you!

Your internal data analyst (if you have one)

EHR vendor representative?

Other geeks you know?



Data Extraction

Scenario B

You are part of a system with no IT support.

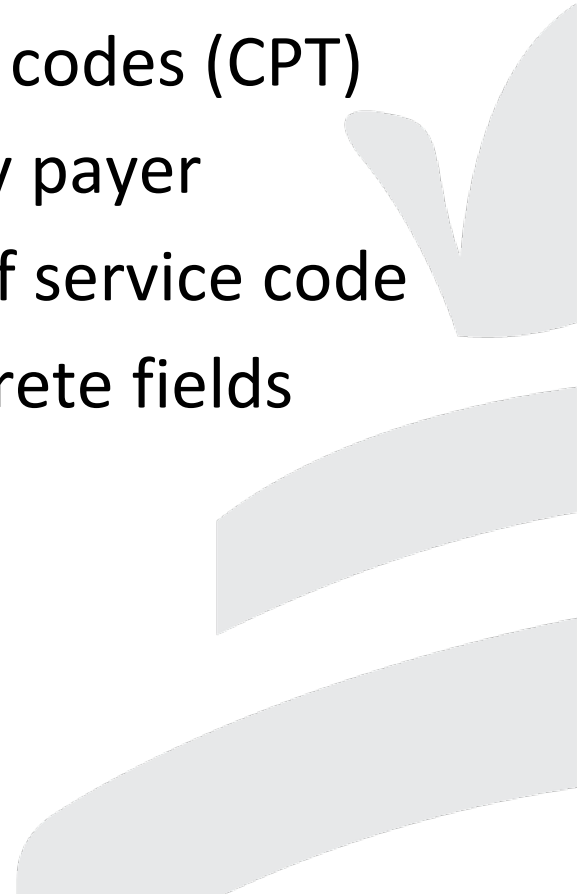


Creation of Customized Report

- **Vendor/VAR**
 - **Cost/Cost Sharing**
 - **HIPAA Issues**
 - **Specs**
- 

Creation of Customized Report

Suggested Fields

- Name
 - Patient ID
 - DOB
 - Gender
 - Race/Ethnicity
 - Date of Service
 - Visit number
 - Provider type
 - Diagnosis codes (ICD)
 - Procedure codes (CPT)
 - Third party payer
 - Location of service code
 - Other discrete fields
- 

Advanced EHR Training

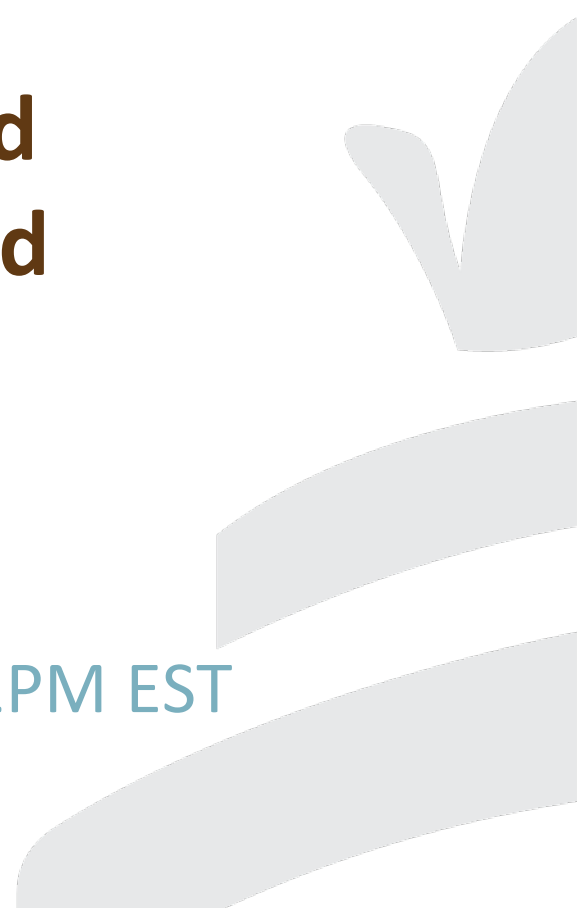
- **Data savvy staff**
- **Excel expertise for analysis**
 - Consider graduate students/interns

Join our next webinar

Quality Counts: State and Local Perspectives and Promising Strategies for Documenting and Reporting the Five Standardized Performance Measures

Presenters: ColIN participants

Date: Thursday, November 17, 2016 at 2PM EST



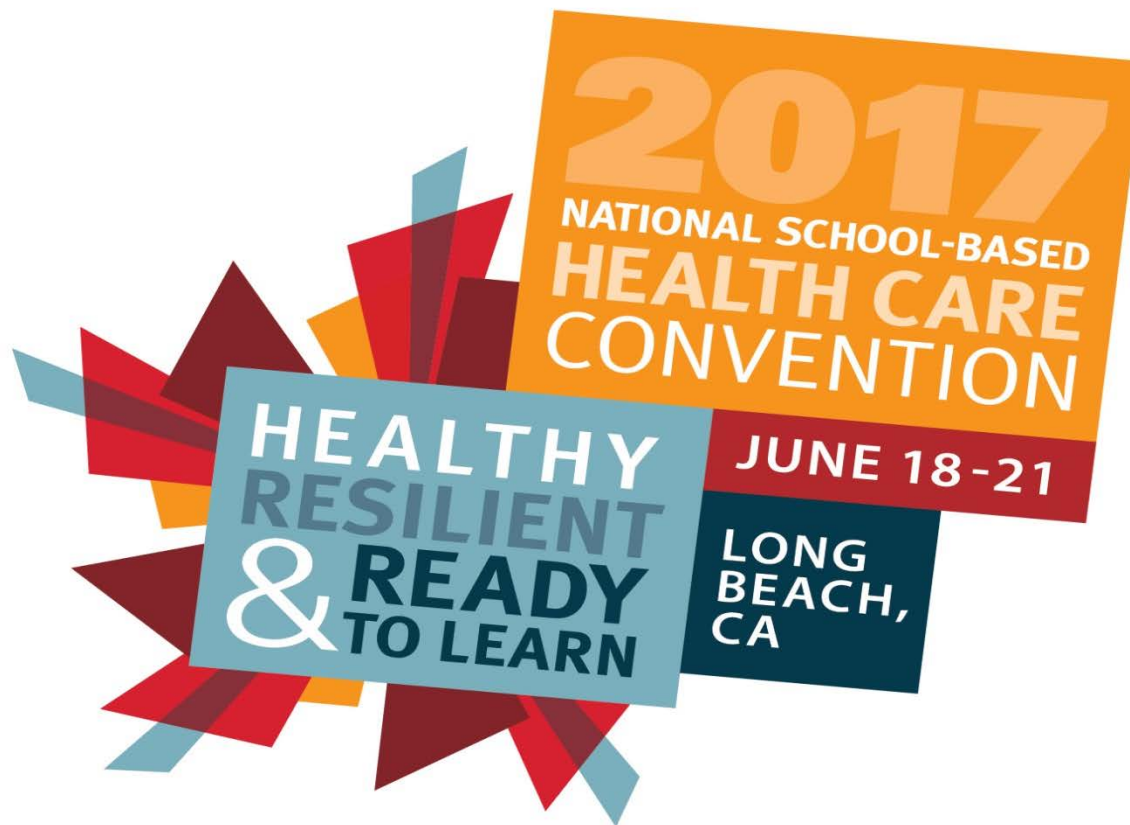
Questions?



www.sbh4all.org/membership

BECOME A MEMBER!

Call for abstracts open September 19-November 6



Questions?

Contact

US:

Maureen Daly

daly4050@gmail.com

Lynn Bakken

lynn.bakken@mcpn.org

Hayley Love

hlove@sbh4all.org

